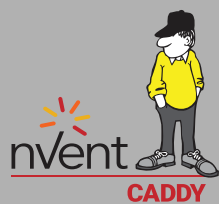


SOPORTERÍA PARA ALARMA Y DETECCIÓN



Available At

ERICO MEXICO
+52 55 3686 9785

Prepared By

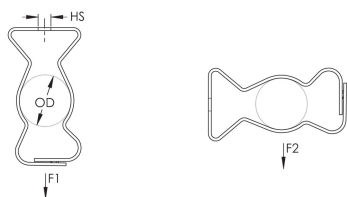
karlo.charles@nvent.com
rafel.oriz@nvent.com
miguel.carrillo1@nvent.com

Snap Close Conduit/Pipe Clamp



The nVent CADDY Snap Close Conduit Clamps (M-Series) are a fast and efficient method to secure conduit branch circuits for electrical installations. The M-Series is designed to provide positional consistency in application by eliminating conduit offset as well as maintain spacing entering electrical boxes. Increase installation efficiency by utilizing our comprehensive conduit range for your next electrical project.

- May be used for either vertical or horizontal installations
- Eliminates need for offset bending conduit
- Finger closure, no tools required
- Locking design has greater resistance to twisting loads and is stronger than any on the market
- Low profile locking tabs and smooth gripping dimples remove the possibility of scrapes
- 812M and 16M feature double tabs to center conduit, increase range and holding power and prevent conduit from sliding



Finish: nVent CADDY Armour

Material: Spring Steel



Catalog Number	Flexible Conduit Size	MC/AC Cable Size	EMT Conduit Size	Rigid Conduit/Pipe Size	Outer Diameter (OD)	Hole Size (HS)
16M4I			3/4", 1"	3/4", 1"	0.920" - 1.38"	1/4"
20M4I			1 1/4"	1 1/4"	1.380" - 1.65"	1/4"
24M4I			1 1/2"	1 1/2"	1.650" - 1.97"	1/4"
32M4I			2"	2"	1.970" - 2.36"	1/4"
6M4I	3/8"	14-2 to 12-3			0.550" - 0.71"	1/4"
812M4I			1/2", 3/4"	1/2", 3/4"	0.710" - 1.18"	1/4"
16M			3/4", 1"	3/4", 1"	0.920" - 1.38"	9/32"
20M			1 1/4"	1 1/4"	1.380" - 1.65"	9/32"
24M			1 1/2"	1 1/2"	1.650" - 1.97"	9/32"
32M			2"	2"	1.970" - 2.36"	9/32"
6M	3/8"	14-2 to 12-3			0.550" - 0.71"	9/32"
812M			1/2", 3/4"	1/2", 3/4"	0.710" - 1.18"	9/32"

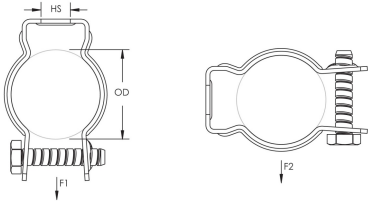
Catalog Number	Hole Type	Static Load 1 (F1)	Static Load 2 (F2)
16M4I	Threaded	100lb	25lb
20M4I	Threaded	100lb	25lb
24M4I	Threaded	100lb	25lb
32M4I	Threaded	100lb	25lb
6M4I	Threaded	100lb	25lb
812M4I	Threaded	100lb	25lb
16M	Plain	100lb	25lb
20M	Plain	100lb	25lb
24M	Plain	100lb	25lb
32M	Plain	100lb	25lb
6M	Plain	100lb	25lb
812M	Plain	100lb	25lb



Bolt Close Conduit/Pipe Clamp



- Retained bolt and built-in nut means there are less parts to handle or drop
- Combo head bolt works with slotted, hex, #3 phillips or #2 robertson drivers



Finish: Electrogalvanized



Catalog Number	Material	Nut Type	Outer Diameter (OD)	EMT Conduit Size	Rigid Conduit/Pipe Size	Hole Size (HS)
CD2.5BSS	Stainless Steel 304 (EN 1.4301)	Hex Nut	1.220" - 1.51"	1 1/4"		0.27"
CD2BSS	Stainless Steel 304 (EN 1.4301)	Hex Nut	1.000" - 1.31"	1"	1"	0.27"
CD3BSS	Stainless Steel 304 (EN 1.4301)	Hex Nut	1.410" - 1.74"	1 1/2"	1 1/4"	0.27"
CD0B	Steel	Built-In Nut	0.670" - 0.84"	1/2"	1/2"	0.28"
CD0BSS	Stainless Steel 304 (EN 1.4301)	Hex Nut	0.670" - 0.84"	1/2"	1/2"	0.28"
CD1B	Steel	Built-In Nut	0.740" - 1.05"	3/4"	3/4"	0.28"
CD1BSS	Stainless Steel 304 (EN 1.4301)	Hex Nut	0.740" - 1.05"	3/4"	3/4"	0.28"
CD2.5B	Steel	Built-In Nut	1.220" - 1.51"	1 1/4"		0.28"
CD2B	Steel	Built-In Nut	1.000" - 1.31"	1"	1"	0.28"
CD3B	Steel	Built-In Nut	1.410" - 1.74"	1 1/2"	1 1/4"	0.28"
CD4B	Steel	Built-In Nut	1 3/4" - 1.9"		1 1/2"	0.28"
CD4BSS	Stainless Steel 304 (EN 1.4301)	Hex Nut	1 3/4" - 1.9"		1 1/2"	0.28"
CD5B	Steel	Built-In Nut	1.910" - 2.88"	2"	2"	0.28"
CD5BSS	Stainless Steel 304 (EN 1.4301)	Hex Nut	1.910" - 2.88"	2"	2"	0.28"
CD6B	Steel	Hex Nut	2.6" - 3"	2 1/2"	2 1/2"	5/16"
CD7B	Steel	Hex Nut	3.150" - 3 1/2"	3"	3"	5/16"
CD8B	Steel	Hex Nut	3.740" - 4.13"	3 1/2"	3 1/2"	5/16"
CD9B	Steel	Hex Nut	4 1/4" - 4.53"	4"	4"	5/16"
CD6BSS	Stainless Steel 304 (EN 1.4301)	Hex Nut	2.6" - 3"	2 1/2"	2 1/2"	0.33"
CD7BSS	Stainless Steel 304 (EN 1.4301)	Hex Nut	3.150" - 3 1/2"	3"	3"	0.33"
CD8BSS	Stainless Steel 304 (EN 1.4301)	Hex Nut	3.740" - 4.13"	3 1/2"	3 1/2"	0.33"
CD9BSS	Stainless Steel 304 (EN 1.4301)	Hex Nut	4 1/4" - 4.53"	4"	4"	0.33"
CD0B37	Steel	Built-In Nut	0.670" - 0.84"	1/2"	1/2"	0.41"
CD1B37	Steel	Built-In Nut	0.740" - 1.05"	3/4"	3/4"	0.41"
CD2.5B37	Steel	Built-In Nut	1.220" - 1.51"	1 1/4"		0.41"
CD2B37	Steel	Built-In Nut	1.000" - 1.31"	1"	1"	0.41"
CD3B37	Steel	Built-In Nut	1.410" - 1.74"	1 1/2"	1 1/4"	0.41"
CD4B37	Steel	Built-In Nut	1 3/4" - 1.9"		1 1/2"	0.41"
CD5B37	Steel	Built-In Nut	1.910" - 2.88"	2"	2"	0.41"



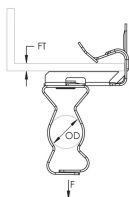
Catalog Number	Static Load 1 (F1)	Static Load 2 (F2)	Packing Quantity	Certifications
CD2.5BSS	200lb	50lb	1.0000	cUL, UL
CD2BSS	200lb	50lb	1.0000	
CD3BSS	200lb	50lb	1.0000	cUL, UL
CD0B	200lb	50lb	1.0000	cUL, UL
CD0BSS	200lb	50lb	1.0000	cUL, UL
CD1B	200lb	50lb	1.0000	cUL, ITB, UL
CD1BSS	200lb	50lb	1.0000	cUL, UL
CD2.5B	200lb	50lb	1.0000	cUL, UL
CD2B	200lb	50lb	1.0000	cUL, UL
CD3B	200lb	50lb	1.0000	cUL, ITB, UL
CD4B	200lb	50lb	1.0000	cUL, ITB, UL
CD4BSS	200lb	50lb	1.0000	cUL, UL
CD5B	200lb	50lb	1.0000	cUL, ITB, UL
CD5BSS	350lb	50lb	1.0000	cUL, UL
CD6B	350lb	50lb	1.0000	
CD7B	350lb	50lb	1.0000	
CD8B	350lb	50lb	1.0000	
CD9B	350lb	50lb	1.0000	
CD6BSS	350lb	50lb	1.0000	
CD7BSS	350lb	50lb	1.0000	
CD8BSS	350lb	50lb	1.0000	
CD9BSS	350lb	50lb	1.0000	
CD0B37	200lb	50lb	1.0000	
CD1B37	200lb	50lb	1.0000	
CD2.5B37	200lb	50lb	1.0000	
CD2B37	200lb	50lb	1.0000	
CD3B37	200lb	50lb	1.0000	
CD4B37	200lb	50lb	1.0000	
CD5B37	200lb	50lb	1.0000	



EM-M Conduit/Pipe to Flange Clip



- Supports conduit/pipe or cable from beam flanges
- Snap close clip pivots a full 360°
- Requires only a hammer to install



Finish: nVent CADDY Armour

Material: Spring Steel



Catalog Number	EMT Conduit Size	Rigid Conduit/Pipe Size	MC/AC Cable Size	Outer Diameter (OD)	Flange Thickness (FT)	Flexible Conduit Size
16M24	3/4", 1"	3/4", 1"		0.920" - 1.38"	1/8"	
20M24	1 1/4"	1 1/4"		1.380" - 1.65"	1/8"	
24M24	1 1/2"	1 1/2"		1.650" - 1.97"	1/8"	
32M24	2"	2"		1.970" - 2.36"	1/8"	
6M24		3/8"	14-2 to 12-3	0.550" - 0.71"	1/8"	3/8"
812M24	1/2", 3/4"	1/2", 3/4"		0.710" - 1.18"	1/8"	
16M58	3/4", 1"	3/4", 1"		0.920" - 1.38"	5/16" - 1/2"	
20M58	1 1/4"	1 1/4"		1.380" - 1.65"	5/16" - 1/2"	
24M58	1 1/2"	1 1/2"		1.650" - 1.97"	5/16" - 1/2"	
32M58	2"	2"		1.970" - 2.36"	5/16" - 1/2"	
6M58		3/8"	14-2 to 12-3	0.550" - 0.71"	5/16" - 1/2"	3/8"
812M58	1/2", 3/4"	1/2", 3/4"		0.710" - 1.18"	5/16" - 1/2"	
6M912		3/8"	14-2 to 12-3	0.550" - 0.71"	9/16" - 3/4"	3/8"
812M1318	1/2", 3/4"	1/2", 3/4"		0.710" - 1.18"	13/16" - 1 1/8"	
812M912	1/2", 3/4"	1/2", 3/4"		0.710" - 1.18"	9/16" - 3/4"	
16M912	3/4", 1"	3/4", 1"		0.920" - 1.38"	9/16" - 3/4"	
20M912	1 1/4"	1 1/4"		1.380" - 1.65"	9/16" - 3/4"	
24M912	1 1/2"	1 1/2"		1.650" - 1.97"	9/16" - 3/4"	
32M912	2"	2"		1.970" - 2.36"	9/16" - 3/4"	

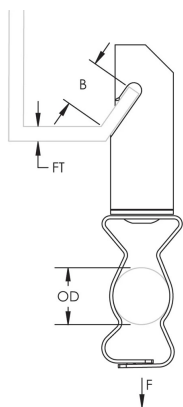
Catalog Number	Static Load (F)	Certifications
16M24	75lb	
20M24	75lb	
24M24	75lb	
32M24	75lb	
6M24	75lb	
812M24	75lb	
16M58	75lb	
20M58	75lb	
24M58	75lb	
32M58	75lb	
6M58	75lb	
812M58	75lb	
6M912	75lb	
812M1318	75lb	cUL, UL
812M912	75lb	
16M912	75lb	
20M912	75lb	
24M912	75lb	cUL, UL
32M912	75lb	



123-M Conduit to Z Purlin Clip



- Snap-close conduit support
- Conduit clip rotates 360 degrees
- Supports conduit from purlin



Finish: nVent CADDY Armour

Material: Spring Steel

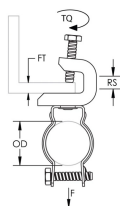


Catalog Number	EMT Conduit Size	Outer Diameter (OD)	Flange Thickness (FT)	B	Static Load (F)
12316M	3/4", 1"	0.920" - 1.38"	0.0600" - 0.1"	5/8" Min	100lb
123812M	1/2", 3/4"	0.710" - 1.18"	0.0600" - 0.1"	5/8" Min	100lb

BC200-CD Conduit to Beam Clamp



- Eliminates offset bending conduit
- Threaded hole on back
- Ideal for electrical, mechanical, and HVAC applications



Finish: Electrogalvanized

Material: Steel



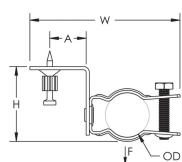
Catalog Number	Outer Diameter (OD)	EMT Conduit Size	Rigid Conduit Size	Flange Thickness (FT)	Rod Size (RS)	Torque (TQ)
BC200CD0B	0.670" - 0.84"	1/2"	1/2"	1/2" Max	1/4"	3 ft·lbf
BC200CD1B	0.740" - 1.05"	3/4"	3/4"	1/2" Max	1/4"	3 ft·lbf
BC200CD2B	1.000" - 1.31"	1"	1"	1/2" Max	1/4"	3 ft·lbf

Catalog Number	Static Load (F)	Certifications
BC200CD0B	100lb	cUL, UL
BC200CD1B	100lb	cUL, ITB, UL
BC200CD2B	100lb	cUL, UL

Bolt Close Conduit/Pipe Clamp with Shot-Fire Bracket



- Retained bolt and built-in nut means there are less parts to handle or drop
- Combo head bolt works with slotted, hex, #3 phillips or #2 robertson drivers
- Complete with shot-fire bracket and pre-assembled drive pin from DEWALT®
- Quickly and easily attaches to concrete, steel or composite metal decking
- Integrated pin installs easily using powder-actuated or single-shot gas-actuated tools
- ICC-ES ESR-2024 evaluation report available for drive pin from DEWALT®



Catalog Number	Material	Finish	Outer Diameter (OD)	EMT Conduit Size	Rigid Conduit/Pipe Size	Width (W)
CD0BSF	Steel	Electrogalvanized	0.670" - 0.84"	1/2"	1/2"	3 3/8"

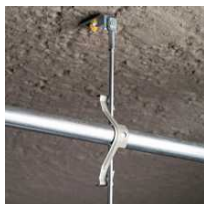
Catalog Number	Height (H)	A	Static Load (F)
CD0BSF	1 3/4"	1.3"	100lb

Uses Powers Fasteners, Inc. part number 50032.

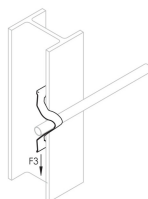
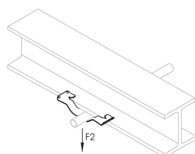
Static load was established based on a 1" (25.4 mm) embedment depth and 3,000 psi (20.68 MPa) lightweight concrete. For variations in embedment and material please consult anchors.dewalt.com.

Pre-assembled drive pin from Powers Fasteners, Inc. works with Powers® C4CZ, Simpson® GCN-MEPKT, SPIT® P1000, P200, P2201, P3500 / PA3500, P35s, P45, P60, P7201, Sniper; Ramset® 721, Cobra, D45 / D60 / D60L, M70, SA270, T3SS, TS750P, TS60P, Viper; Hilti® DX35, DX350 / DX351 / DX36M, DX100 / DX200, DX460, DXA40, DXA41, DXE72 / DX400; Würth® Diva-1, BST-1, BST-2 or equivalent nailers.

Cable/Conduit Clip



- Supports conduit to rod, wire or flange
- Can also be used for flexible metallic tubing, armored cable, portable cables, control tubes and communications cable
- Available for EMT, rigid, ENT, IMT, MC/AC and aluminum conduit
- No installation tools required



Finish: nVent CADDY Armour

Material: Spring Steel



Catalog Number	EMT Conduit Size	Rigid Conduit Size	MC/AC Cable Size	Outer Diameter (OD)	Static Load 1 (F1)	Static Load 2 (F2)
K12	1/2", 3/4"	1/2", 3/4"		0.94" Max	50lb	100lb
K8	1/2"	1/2"	12-3	0.71" Max	50lb	100lb
K16	3/4", 1"	1/2", 3/4"		1.18" Max	50lb	100lb
K20	1", 1 1/4"	3/4", 1"		1.65" Max	50lb	100lb
KX			14-2 to 12-3	0.47" Max		

Catalog Number	Static Load 3 (F3)	Packing Quantity	Certifications
K12	15lb	1.0000	cUL, ITB, UL
K8	15lb	1.0000	cUL, UL
K16	15lb	1.0000	cUL, ITB, UL
K20	22lb	1.0000	cUL, ITB, UL
KX		1.0000	cUL, UL

Conduit Size	#10 or #12 Wire	#8 or #9 Wire	3/16" or 1/4" Rod	1/8" - 1/4" Flange	5/16" - 3/8" Flange	7/16" - 1/2" Flange
1/2" EMT	K8	K8	K8	K8	K12	K12
1/2" Rigid	K8	K12	K12	K12	K12	K16
3/4" EMT	K12	K12	K12	K12	K16	K16
3/4" Rigid	K12	K12	K16	K16	K20	K20
1" EMT	-	K16	K16	K16	K20	K20
1" Rigid	-	-	-	K20	K20	K20
1 1/4" EMT	-	K20	K20	K20	-	-

Cable Size	#12 Wire	#8, #9, #10 Wire
14-2 (.433" - .475" OD)	KX	KX
14-3 (.453" - .500" OD)	KX	KX
12-2 (.467" - .510" OD)	KX	KX
12-3 (.489" - .535" OD)	KX	K8

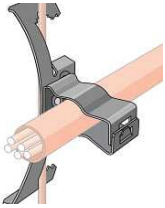
May require dedicated drop wire/rod and EC311. Consult local authority.

For horizontal application only when installing conduit.

Snap Close Conduit to Rod/Wire Clip



- Provides attachment of conduit and cable
- Increased capability and application options by combining 4Z and 6Z products into one enhanced and efficient offering
- Improved multi-function clip allows for optimized inventory while reducing job site scheduling risks associated with multiple SKUs



Finish: nVent CADDY Armour

Material: Spring Steel



Catalog Number	EMT Conduit Size	MC/AC Cable Size	Outer Diameter	Flexible Conduit Size	Rod Size	Wire Size
4Z3416M	3/4", 1"		0.920" - 1.38"		1/4", 5/16", 3/8"	#12 - #8
4Z346M		14-2 to 12-3	0.550" - 0.71"	3/8"	1/4", 5/16", 3/8"	#12 - #8
4Z34812M	1/2", 3/4"		0.710" - 1.18"		1/4", 5/16", 3/8"	#12 - #8

Catalog Number	Flange Thickness	Certifications
4Z3416M	1/8" - 3/8"	cUL, UL
4Z346M	1/8" - 3/8"	
4Z34812M	1/8" - 3/8"	cUL, UL

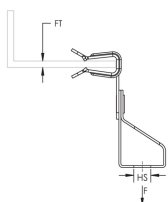
NEC® 300.11 requires dedicated drop wire/rod and EC311.

4Z parts installed on 3/8" (M10) smooth rod in the F2 direction has a Static Load Rating of 15 lb (67 N).

H-Ti/T Rod to Flange Clip



- Suspends threaded rod from beam flanges
- Threaded rod hanger can swivel to provide a vertical dropdown
- Requires only a hammer to install



Finish: nVent CADDY Armour

Material: Spring Steel

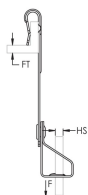


Catalog Number	Hole Size (HS)	Hole Type	Flange Thickness (FT)	Static Load (F)	Packing Quantity
4TI24	1/4"	Threaded	1/8"	200lb	1.0000
6TA24	3/8"	Plain	1/8"	200lb	1.0000
6TI24	3/8"	Threaded	1/8"	200lb	1.0000
4TI58	1/4"	Threaded	5/16" - 1/2"	200lb	1.0000
4TI912	1/4"	Threaded	9/16" - 3/4"	200lb	1.0000
6TI58	3/8"	Threaded	5/16" - 1/2"	200lb	1.0000

VF-Ti/T Rod to C-Purlin Clip



- Hammer-on or install from the floor with the VAFT tool
- Provides an attachment for nVent CADDY Speed Link assemblies, wire, S-hooks, or chain from purlin and bar joist



Finish: nVent CADDY Armour

Material: Spring Steel

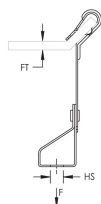


Catalog Number	Hole Size (HS)	Hole Type	Flange Thickness (FT)	Height (H)	Static Load (F)
VF144TI	1/4"	Threaded	0.0600" - 1/4"	5 3/16"	160lb
VF146T	3/8"	Plain	0.0600" - 1/4"	5 3/16"	160lb
VF146TI	3/8"	Threaded	0.0600" - 1/4"	5 3/16"	160lb

AF-Ti/T Rod to Z Purlin Clip



- Used to support 1/4" and 3/8" threaded rod from purlin beam flanges 1/16" thru 1/4" thick
- Hammer-on or install from the floor with the VAFT tool
- Provides method for attaching rod to Z purlin



Finish: nVent CADDY Armour

Material: Spring Steel

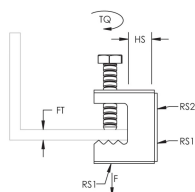


Catalog Number	Hole Size (HS)	Hole Type	Flange Thickness (FT)	Static Load (F)
AF144TI	1/4"	Threaded	0.0600" - 1/4"	100lb
AF146T	3/8"	Plain	0.0600" - 1/4"	100lb
AF146TI	3/8"	Threaded	0.0600" - 1/4"	100lb

BC Beam Clamp



- Easy installation to beam flanges



Catalog Number	Material	Finish	Rod Size 1 (RS1)	Rod Size 2 (RS2)	Hole Size (HS)	Flange Thickness (FT)
BC	Spring Steel	nVent CADDY Armour	1/4"	10"	7/16"	1/2" Max

Catalog Number	Torque (TQ)	Static Load (F)
BC	20 in-lb	100lb

Setscrew must be tightened and torqued onto the sloped side of the I-beam.

HangerMate® Vertical Mount Screw for Concrete



- End-drilled and tapped for attaching threaded components to concrete
- Solid, one piece cold formed part; head cannot spin off or unscrew from body
- Tapered threads allow for easy starting in pre-drilled hole

Finish: Electrogalvanized

Material: Steel

Catalog Number	Rod Size	Screw Diameter	Screw Length	Drill Bit Diameter	Ultimate Static Load
HMZG365	1/4"	5/16"	2 1/4"	1/4"	2188lb
HMZG730	3/8"	5/16"	2 1/4"	1/4"	2188lb

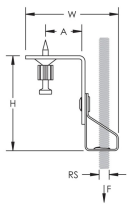
Tested in 3650 psi concrete.

Appropriate safety factors should be applied for design purposes.

Thread Install Rod Hanger with Shot-Fire Bracket



- Suspends threaded rod without the need for additional hardware
- Complete with shot-fire bracket and pre-assembled drive pin from DEWALT®
- Quickly and easily attaches to concrete, steel or composite metal decking
- Integrated pin installs easily using powder-actuated or single-shot gas-actuated tools
- ICC-ES ESR-2024 evaluation report available for drive pin from DEWALT®



Finish: Electrogalvanized;nVent CADDY Armour

Material: Steel;Spring Steel

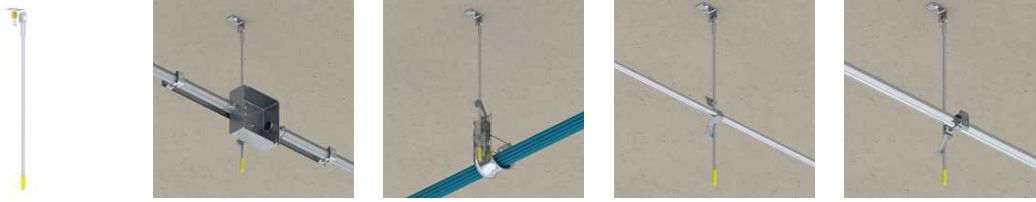
Catalog Number	Rod Size (RS)	Width (W)	Height (H)	A	Static Load (F)
4TIBSF	1/4"	2.31"	2.35"	1.3"	100lb
6TIBSF	3/8"	2.31"	2.35"	1.3"	100lb

Uses Powers Fasteners, Inc. part number 50032.

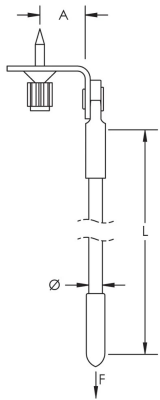
Static load was established based on a 1" (25.4 mm) embedment depth and 3,000 psi (20.68 MPa) lightweight concrete. For variations in embedment and material please consult anchors.dewalt.com.

For shot-fired supports in seismic design category D, E, or F, maximum load is the lesser of 90 lb (400 N) or the published load.

Drop Smooth Rod with Shot-Fire Bracket



- Quickly and easily attaches to concrete, steel or composite metal decking
- Integrated pin installs easily using powder-actuated or single-shot gas-actuated tools
- Works with most standard nVent CADDY spring steel fasteners designed for rod attachments
- Rod is rigid and does not require secondary attachment to ceiling grid per NEC 300.11
- Stocked inventory - available when you need it
- Includes pre-assembled end-cap
- Specialized packaging simplifies material handling and minimizes sorting
- Rods are ready to install out of the box



Finish: Electrogalvanized

Material: Steel



Catalog Number	Length (L)	Diameter (Ø)	A	Static Load (F)
DR4SF12	12"	0.21"	1.3"	95lb
DR4SF24	24"	0.21"	1.3"	95lb
DR4SF36	36"	0.21"	1.3"	95lb
DR4SF48	48"	0.21"	1.3"	95lb

Uses Powers Fasteners, Inc. part number 50378.

Static load was established based on a 1-1/8" (28.6 mm) embedment depth and 3,000 psi (20.68 Mpa) normal-weight concrete. For variations in embedment and material please consult www.powers.com.

Pre-assembled drive pin from Powers Fasteners, Inc. works with Powers® C4CZ, Simpson® GCN-MEPKT, SPIT® P1000, P200, P2201, P3500 / PA3500, P35s, P45, P60, P7201, Sniper; Ramset® 721, Cobra, D45 / D60 / D60L, M70, SA270, T3SS, TS750P, TS60P, Viper; Hilti® DX35, DX350 / DX351 / DX36M, DX100 / DX200, DX460, DXA40, DXA41, DXE72 / DX400; Würth® Diva-1, BST-1, BST-2 or equivalent nailers.

For shot-fired supports in seismic design category D, E, or F, maximum load is the lesser of 90 lb (400 N) or the published load.

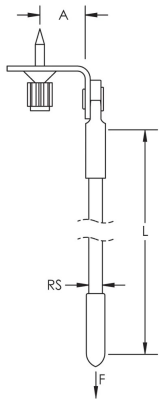
Exempt from seismic design when supporting conduits less than 2-1/2" (64 mm) trade size, regardless of Ip.

Refer to DeWalt Engineered by Powers Ceiling Clip Assembly ICC-ES Evaluation Report ESR-2024 for the allowable load ratings in various substrate material and embedment depths.

Drop Threaded Rod with Shot-Fire Bracket



- Quickly and easily attaches to concrete, steel or composite metal decking
- Integrated pin installs easily using powder-actuated or single-shot gas-actuated tools
- Works with most standard nVent CADDY spring steel fasteners designed for rod attachments
- Rod is rigid and does not require secondary attachment to ceiling grid per NEC 300.11
- Stocked inventory - available when you need it
- Includes pre-assembled end-cap
- Specialized packaging simplifies material handling and minimizes sorting
- Rods are ready to install out of the box



Finish: Electrogalvanized

Material: Steel



Catalog Number	Length (L)	Rod Size (RS)	A	Static Load (F)
DR4TSF12	12"	1/4"	1.3"	95lb
DR4TSF24	24"	1/4"	1.3"	95lb
DR4TSF36	36"	1/4"	1.3"	95lb
DR4TSF40	40"	1/4"	1.3"	95lb
DR4TSF48	48"	1/4"	1.3"	95lb
DR4TSF60	60"	1/4"	1.3"	95lb
DR4TSF72	72"	1/4"	1.3"	95lb

Uses Powers Fasteners, Inc. part number 50378.

Static load was established based on a 1-1/8" (28.6 mm) embedment depth and 3,000 psi (20.68 Mpa) normal-weight concrete. For variations in embedment and material please consult www.powers.com.

Pre-assembled drive pin from Powers Fasteners, Inc. works with Powers® C4CZ, Simpson® GCN-MEPKT, SPIT® P1000, P200, P2201, P3500 / PA3500, P35s, P45, P60, P7201, Sniper; Ramset® 721, Cobra, D45 / D60 / D60L, M70, SA270, T3SS, TS750P,

TS60P, Viper; Hilti® DX35, DX350 / DX351 / DX36M, DX100 / DX200, DX460, DXA40, DXA41, DXE72 / DX400; Würth® Diva-1, BST-1, BST-2 or equivalent nailers.

For shot-fired supports in seismic design category D, E, or F, maximum load is the lesser of 90 lb (400 N) or the published load.

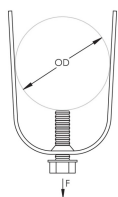
Exempt from seismic design when supporting conduits less than 2-1/2" (64 mm) trade size, regardless of Ip.

Refer to DeWalt Engineered by Powers Ceiling Clip Assembly ICC-ES Evaluation Report ESR-2024 for the allowable load ratings in various substrate material and embedment depths.

SCH1 Single Piece Strut Clamp for Conduit



- One-piece conduit clamp
- No screws or bolts to drop
- Requires only a screwdriver or nutdriver for installation
- Fits into open side of strut channel



Finish: Electrogalvanized

Material: Steel

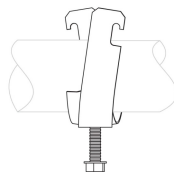
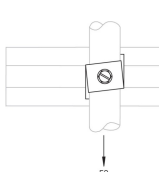
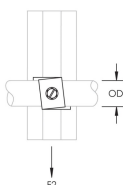
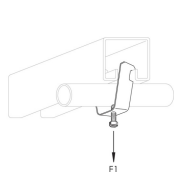


Catalog Number	Outer Diameter (OD)	EMT Conduit Size	Rigid Conduit/Pipe Size	Static Load (F)
SCH8	0.340" - 0.71"	1/2"		200lb
SCH12	0.570" - 0.92"	3/4"	1/2"	200lb
SCH16	0.720" - 1.16"	1"	3/4"	200lb
SCH20	1.000" - 1.51"	1 1/4"	1"	200lb

SCH2 Single Piece Strut Clamp for Cable/Conduit



- One-piece cable/conduit clamp with protective boot
- No screws or bolts to drop
- Requires only a screwdriver or nutdriver for installation
- Fits into open side of strut channel
- FM® Specification Tested (from 1/2" to 4" of EMT Conduit Size)



Finish: Electrogalvanized

Material: Steel

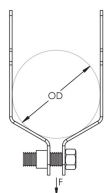


Catalog Number	Outer Diameter (OD)	EMT Conduit Size	Rigid Conduit/Pipe Size	Static Load 1 (F1)	Ultimate Static Load 2 (F2)	Ultimate Static Load 3 (F3)
SCH6B	0.100" - 0.63"			200lb	75lb	50lb
SCH8B	0.340" - 0.71"	1/2"		200lb	75lb	50lb
SCH12B	0.570" - 0.92"	3/4"	1/2"	200lb	75lb	50lb
SCH16B	0.720" - 1.16"	1"	3/4"	200lb	75lb	50lb
SCH20B	1.000" - 1.51"	1 1/4"	1"	200lb	75lb	50lb
SCH24B	1 1/4" - 1.74"	1 1/2"	1 1/4"	350lb	75lb	50lb
SCH32B	1.740" - 2.2"	2"	1 1/2"	350lb	75lb	50lb
SCH40B	2.000" - 2.38"		2"	350lb	75lb	50lb
SCH48B	2.380" - 2.88"	2 1/2"	2 1/2"	350lb	75lb	50lb
SCH56B	2.720" - 3 1/2"	3"	3"	350lb	75lb	50lb
SCH64B	3 1/4" - 4"	3 1/2"	3 1/2"	350lb	75lb	50lb
SCH72B	3.850" - 4 1/2"	4"	4"	350lb	75lb	50lb

SK Single Piece Strut Clamp for Conduit



- One piece break apart strut clamp for EMT and Rigid conduit
- Includes thread impression and captured screw



Finish: Electrogalvanized



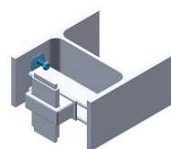
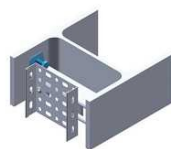
Catalog Number	Material	EMT Conduit Size	Rigid Conduit/Pipe Size	Outer Diameter (OD)	Width (W)	Static Load (F)
SK85I	Steel	1/2"	1/2"	0.710" - 0.84"	1 1/4"	200lb
SK8ALA	Aluminum	1/2"	1/2"	0.710" - 0.84"	1 1/4"	150lb
SK125I	Steel	3/4"	3/4"	0.920" - 1.05"	1 1/4"	200lb
SK12ALA	Aluminum	3/4"	3/4"	0.920" - 1.05"	1 1/4"	150lb
SK165I	Steel	1"	1"	1.160" - 1.32"	1 1/4"	200lb
SK16ALA	Aluminum	1"	1"	1.160" - 1.32"	1 1/4"	150lb
SK205I	Steel	1 1/4"	1 1/4"	1.510" - 1.66"	1 1/4"	200lb
SK20ALA	Aluminum	1 1/4"	1 1/4"	1.510" - 1.66"	1 1/4"	150lb
SK245I	Steel	1 1/2"	1 1/2"	1.740" - 1.9"	1 1/4"	200lb
SK24ALA	Aluminum	1 1/2"	1 1/2"	1.740" - 1.9"	1 1/4"	150lb
SK325I	Steel	2"	2"	2.200" - 2.38"	1 1/4"	200lb
SK32ALA	Aluminum	2"	2"	2.200" - 2.38"	1 1/4"	150lb
SK405I	Steel	2 1/2"	2 1/2"	2.88"	1 1/4"	350lb
SK485I	Steel	3"	3"	3 1/2"	1 1/4"	350lb
SK565I	Steel	3 1/2"	3 1/2"	4"	1 1/4"	350lb
SK645I	Steel	4"	4"	4 1/2"	1 1/4"	350lb

Catalog Number	Certifications
SK85I	cUL, UL
SK8ALA	
SK125I	cUL, UL
SK12ALA	
SK165I	cUL, UL
SK16ALA	
SK205I	cUL, UL
SK20ALA	
SK245I	cUL, UL
SK24ALA	
SK325I	cUL, UL
SK32ALA	
SK405I	cUL, UL
SK485I	cUL, UL
SK565I	cUL, UL
SK645I	cUL, UL

INC8 Internal Strut Beam Clamp



- Mounts strut within beams



Catalog Number	Material	Finish	Strut Type	A	Screw Length (L)	Screw Diameter (Sc)
INC8T5	Spring Steel	nVent CADDY Armour	A (1 5/8" x 1 5/8"), C (13/16" x 1 5/8")	0.51"	1"	5/16"

Catalog Number	Torque (TQ)	Static Load (F)	Packing Quantity
INC8T5	5 ft-lbf	100lb	1.0000

Strut channel must be cut 3/4" (20mm) shorter than the inner distance between the two beam flanges in order to accomodate the clamps.



Telescoping Screw Gun Box Bracket



- Can mount multiple boxes
- Notched and marked for easy identification and bending
- Improved design with stamped inch markings and pilot holes accelerates precise box conduit mounting between studs
- Pilot holes allow easy box attachment with a screwdriver
- Requires only a screw gun to install
- Can be mounted to face or inside of stud
- Adjustable for non-standard stud spacing
- Interlocking tab prevents accidental disassembly
- Unique, one-piece, break apart design

Finish: Pregalvanized

Material: Steel



Catalog Number	Stud Spacing	Box Depth	Packing Quantity
TSGB16	11" - 18"	1 1/4", 2 1/8"	1.0000
TSGB1624	15 3/4" - 25"	1 1/2", 2 1/8", 2 1/2"	1.0000
TSGB24	17" - 26"	1 1/2", 2 1/8", 2 1/2"	1.0000

Plastic Low Voltage Mounting Plate



- No sharp metal edges with plastic design
- Fast, easy way to install
- No installation tools required to secure bracket in the drywall opening
- Serrated interlocking system secures tightly
- Template points on brackets help eliminate multiple measurement markings during installation
- Recessed design helps assure flush mount of device
- Eliminates the need for electrical boxes on low voltage class 2 applications

Material: Acrylonitrile Butadiene Styrene

Finish: Plain



Catalog Number	Gang	Drywall Thickness
MP1P	1	1/4" - 1 1/4"
MP34P	3, 4	1/4" - 1 1/4"
MPAL2	2	1/4" - 1 1/4"

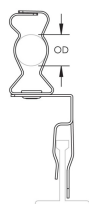
No load rating, for positioning only.

For low voltage Class 2 use only.

MATA Conduit to T-Grid Clip



- Provides a method of securing conduit above acoustical tee bar
- No tools required for installation
- Eliminates need for offset bending conduit



Finish: nVent CADDY Armour

Material: Spring Steel

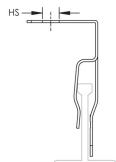
Catalog Number	EMT Conduit Size	MC/AC Cable Size	Outer Diameter (OD)	Flexible Conduit Size
6MATA		14-2 to 12-3	0.55"	3/8"
812MATA	1/2", 3/4"		0.710" - 1.18"	
16MATA	3/4", 1"		0.920" - 1.38"	

No load rating, for positioning only.
 Additional support required per NEC® 300.11.

T-Grid Clip, Top Mount



- Clips on acoustical tee bar providing a threaded hole for securing conduit, boxes, or bridle rings
- Eliminates need for offset bending conduit



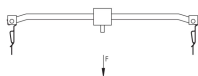
Catalog Number	Material	Finish	Hole Size (HS)	Hole Type
ATA4I	Spring Steel	nVent CADDY Armour	1/4"	Threaded

No load rating, for positioning only.

T-Grid Box Hanger



- Dual height feature permits 1-1/2" (38 mm) deep electrical box to be mounted flush with tile or offset 3/4" (19 mm) for plaster ring
- Allows 2-1/8" (54 mm) deep electrical box to be mounted flush with tile
- Snaps easily onto T-Grid
- Hanger comes complete with box mounting clip and screw



Finish: Pregalvanized;nVent CADDY Armour

Material: Steel;Spring Steel

Catalog Number	T-Grid Span	Ultimate Static Load (F)
51220	20"	20lb
512	24"	20lb
51230	30"	20lb

Not to exceed static load without independent wire support to box mounting clip.

Not permitted for paddle fans.

512SA T-Grid Box Hanger



The nVent CADDY 512SA T-Grid Box Hanger is designed to answer the challenge of accommodating multiple electrical box depths and acoustical tile reveal options in industrial ceilings. The 512SA easily snaps into place, with tool-free installation saving time and increasing efficiency on the jobsite. For added flexibility, the 512SA can be adjusted with the push of a button – an important feature for overhead installation projects.

- Ready to use out of the box with no field assembly required
- Tool-free installation to electrical boxes, no hardware necessary
- Easy, snap-on t-grid clips with push-button adjustability
- Supports market-leading range of electrical box depths
- Easily accommodates multiple boxes with additional nVent CADDY 512X Electrical Box Mounting Clip (sold separately)
- Drop-wire attachment points at t-grid and electrical box clips

Finish: Pregalvanized;nVent CADDY Armour

Material: Steel;Spring Steel



Catalog Number	T-Grid Span	Box Depth	Width	Ultimate Static Load 1	Ultimate Static Load 2	Complies With
512SA	24"	1 1/4", 2 1/8"	2 3/4"	50lb	50lb	UL® 514A
512SA12	12"	1 1/4", 2 1/8"	2 3/4"	50lb	50lb	UL® 514A
512SA48	48"	1 1/4", 2 1/8"	2 3/4"	20lb	50lb	UL® 514A
512SAT	24"	2 1/8", 3 1/2"	2 3/4"	50lb	50lb	UL® 514A

Catalog Number	Certifications
512SA	cUL, UL
512SA12	cUL, UL
512SA48	cUL
512SAT	cUL, UL

Refer to Ultimate Static Load 1 when used as a box support. Refer to Ultimate Static Load 2 when used as a luminaire support with a drop wire.

512SA48 complies with UL® 514A only for luminaire support with drop wire.

Not for fan support.

WARNING

nVent products shall be installed and used only as indicated in nVent's product instruction sheets and training materials. Instruction sheets are available at www.nvent.com and from your nVent customer service representative. Improper installation, misuse, misapplication or other failure to completely follow nVent's instructions and warnings may cause product malfunction, property damage, serious bodily injury and death and/or void your warranty.

© 2023 nVent All rights reserved. nVent, nVent CADDY, nVent ERICO, nVent ERIFLEX and nVent LENTON are owned by nVent or its global affiliates. All other trademarks are the property of their respective owners. nVent reserves the right to change specifications without prior notice.